

Consultation Event and Your Views

Before we finalise the plans ready for construction work starting 2016 we are interested in your thoughts on these proposed changes. We will be holding another consultation event at Sudbury Hill station on **Saturday 6th June from 11am to 3pm** which will give you the opportunity to talk through the scheme with the council and design team.

As well as attending the consultation event we also hope you will visit the website and complete the online survey at **www.westtrans.org**. The questionnaire is ready for you to complete online now, closing **Monday 15th June**. If you are unable to complete it online please add your views below and place in the box provided at Sudbury Hill tube station available until the 6th June. Further comments may be attached on another sheet of paper if needed. There will also be copies of the survey available at the consultation event.

For more information: westtrans@ealing.gov.uk www.westtrans.org Tel 020 8825 9635

Please include your name and address below and indicate whether you are a resident, business owner or both. This information will not be passed on or used for any other purpose.

1. Name: _____

2. Address: _____

3. Postcode: _____

4. Local Resident Business Owner Both

5. Are there any comments you would like to make about the scheme?

Please put this completed questionnaire in the box at Sudbury Hill station (available until the 6th June).

SUDBURY HILL PUBLIC REALM SCHEME

Your local Councils are preparing a scheme to improve your high street and make it a better place to visit and easier to get around for everyone, whether walking, cycling or using public transport. As well as being your high street, Sudbury Hill forms part of an important traffic route and we aim to reduce the impact of that traffic on the high street and make it a more enjoyable place to be for all.

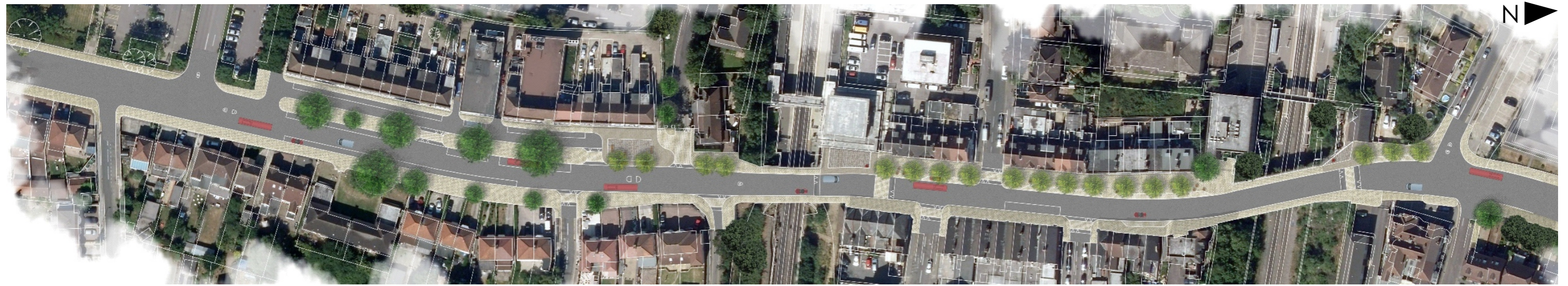


The scheme lies between Sudbury Hill Harrow station and Ealing shopping parade (see plan overpage) and has been prepared by the WestTrans sub-regional partnership along with the three boroughs in the area, Brent, Ealing and Harrow. The scheme funding has come mainly from Transport for London (TfL).

Specialist street design and transport planning advisors have helped plan the improvements and have looked very carefully at how all aspects of the street could be improved. The design has incorporated where feasible the aspirations and comments of local people, community groups and businesses that were gathered at the first consultation event that was undertaken in October last year. We've also continued to work with those organisations and authorities concerned with bus, cycle, rail and other traffic related matters.

On the back of this leaflet you'll find a short questionnaire asking you for any comments on the changes – or you can tell us by completing the online version, where you can provide more feedback and view the scheme layout plans. **Visit: www.westtrans.org**

The Proposed Scheme Design



Issues

The main high street issues we've identified with your help are:

- Traffic dominating the street
- Poor pedestrian environment
- Frequent traffic disruption related to kerbside activity
- Parking spaces that can be awkward to use
- Uncomfortable road conditions for cyclists
- Poor bus waiting areas and facilities
- Too much street clutter – street signs and other obstructions
- Poor pavement condition in some areas
- A lack of public seating and places to stand and talk to other people.

Opportunities

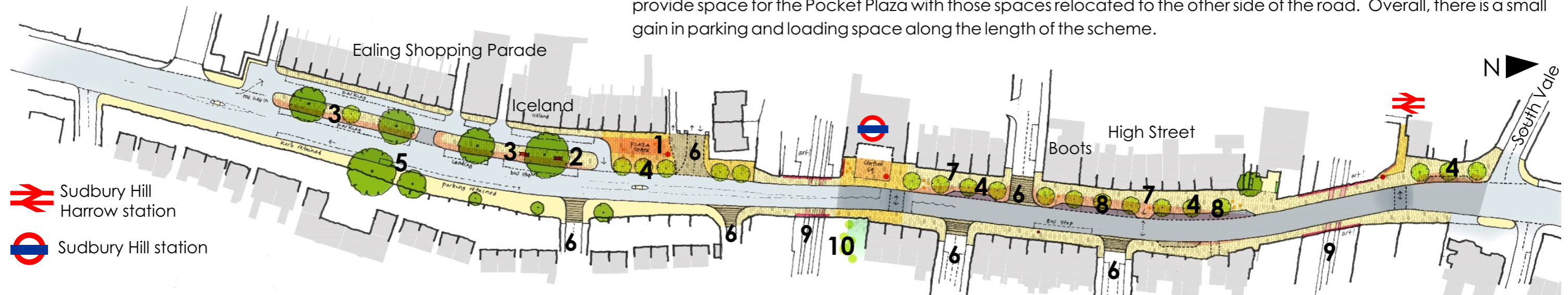
Along with the issues to address, we've also identified a number of opportunities for further improvement:

- Make the street a greener, more pleasant place with trees and planting
- Improve street interest and identity – with better signing and attractive bridge treatments
- Provide some new public space, a 'Pocket Plaza' for street events
- Make the David Lloyd entrance junction easier to walk across
- Improve the setting for Sudbury Hill and Sudbury Hill Harrow stations
- Add high street gateways to say welcome to the area's visitors.

To achieve these things there is a general smoothing and narrowing of the street alignment, removing the sometimes jagged kerb lines that give irregular width footways and contribute to traffic disruption. This road narrowing means a general widening of the footway which will make the street easier to get across for pedestrians and calm traffic movements, thereby helping cyclists too.

We've also made some changes to where parking and loading space is marked out to better balance the street in meeting peoples' needs and activities. We will need to move some of the Ealing shopping parade parking spaces to provide space for the Pocket Plaza with those spaces relocated to the other side of the road. Overall, there is a small gain in parking and loading space along the length of the scheme.

Scheme Features



1. Proposed new pocket plaza / square

2. New northbound bus stop location (relocated from tube station area)

3. Pavement widened to provide improved pedestrian area and bus stop access

4. New street trees

5. Re-located parking spaces (from new pocket plaza area)

6. Raised junction tables on side roads

7. Footways widened on western side of Greenford Road

8. Improved parking bays

9. Attractive bridge treatments

10. Opportunity for pocket park